



Screen Porch

Wellesley, Massachusetts
2005

Kimo Griggs Architects and Kimo, Inc. were asked to consider how to screen in a porch on the West side of the historic house, “Wellesley”, built in 1852 for Horatio Hollis Hunnewell. The historic nature of the site called for great care, but there was little question the improvement was warranted; since 1852 the porch had belonged to mosquitoes on any nice summer day after mid-afternoon.

The addition was designed to eliminate the removal or modification of any historic fabric; the new acrylic roof was hung using an aluminum extrusion and clips for fabric awnings, adjusted level using custom-made adjustable standoffs pushing against the lower fascia. The structure is held in tension to the floor using stainless hardware fastened into the one non-historic material at the edge of the tile floor – the stone facing of the foundation. Perhaps the greatest improvement offered by the new system is the enlargement of the protected area – the new roof captures additional square footage well beyond the historic flat roof, allowing the wood columns and capitals to stand free within a protected environment.

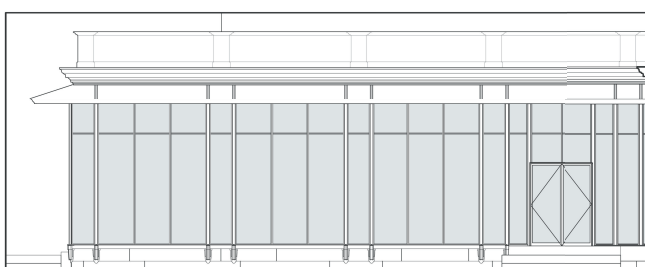
The entire structure is composed of pre-fabricated wood and aluminum elements that were milled using our cnc router for a precise fit and perfect repeatability. The screens can be installed and removed seasonally using no hardware or fasteners. The project won a small projects award from the Boston Society of Architects.

client Mrs. Walter Hunnewell

size approximately 600 s.f.

construction cost withheld at request of client

status completed 2005



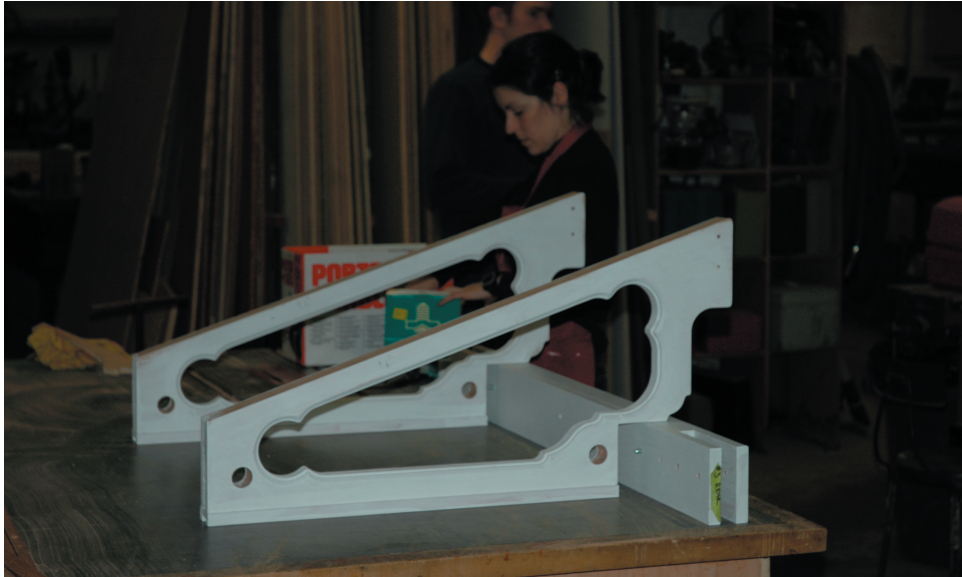
Elevation



View of transparent visor and adjustable standoffs



View from garden of corner with soffit transition



Brackets in production



Interior view of screen and bracket system.